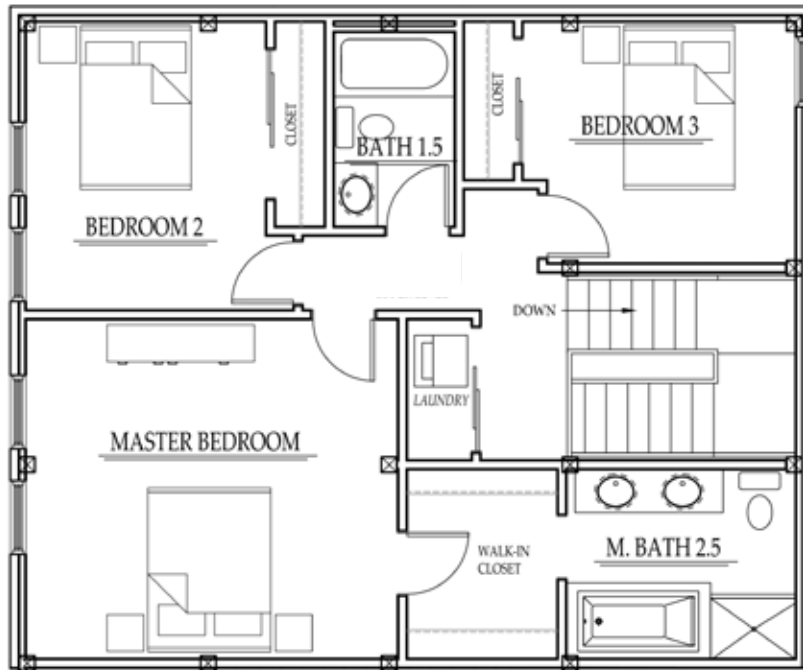
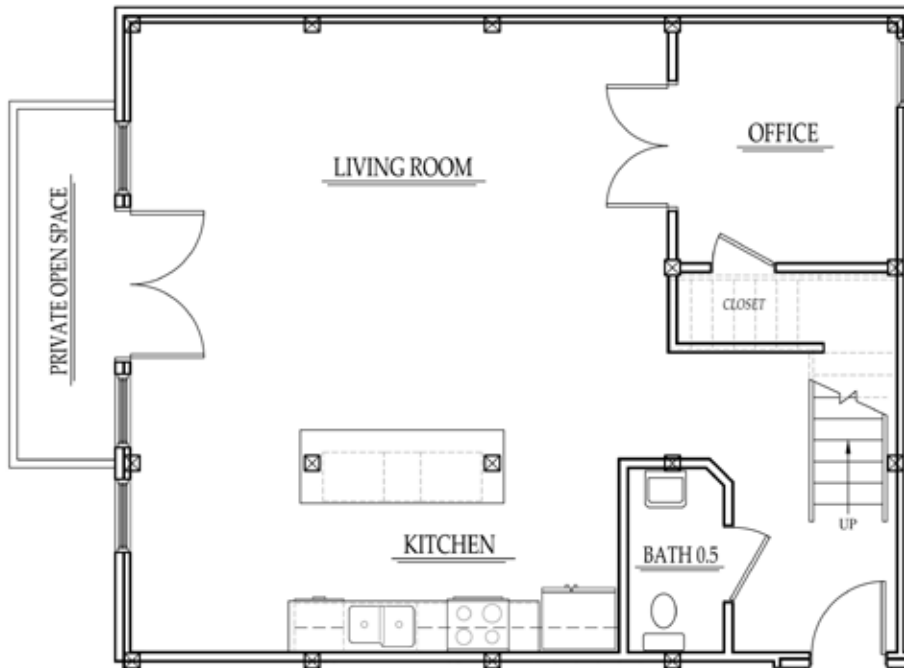


3 BEDROOMS | 2.5 BATHROOMS
APPROX. 1,610 SF



UPPER
LEVEL



LOWER
LEVEL

Exclusively Represented by Kim Cole Real Estate, a California licensed broker. CALBRE #01992006 

This is not an offer to sell, but is intended for information only. Floor plans, elevations, renderings, features, finishes, specifications, scheduling and delivery of home are subject to change at any time and should not be relied upon as exact presentations, express or implied. All square footage references are approximate and should not be considered exact measurements. The seller reserves the right to change floor plans, elevations, features, finishes and specifications at any time, without prior notice.